

PROSPECTUS 2020



MN | BNS | BSc. Nsg



Tribhuvan University
Institute of Medicine

Pokhara Nursing Campus

Pokhara-12, Ramghat



Message from Campus Chief

The nursing profession is the noblest of all professions and in immense demand globally. Pokhara Nursing Campus, the constituent campus of Tribhuvan University, Institute of Medicine (T.U., I.O.M) was established in 2039 B.S with Community Medicine Assistant Program and after 2 years it started Proficiency Certificate level in 2041 B.S. Currently, Pokhara Nursing Campus offers B.Sc Nursing, Bachelor in Nursing Science and Master in Nursing program. Since its establishment, the campus has aimed to produce competent and efficient nursing professionals by administering well designed educational programs. It has untiringly produced around 1700 qualified nurses who are currently serving in government, private health sectors and NGOs/INGOs.

Our acts of today will become the precedents of tomorrow, so we provide the best facilities to our students and honor the teaching learning environment. Life on this campus is both enriching and exciting with library, different laboratories, well facilitated classrooms equipped with multimedia, computer lab, video conferencing room and practical exposure.

We strongly believe that the nursing students are responsible and accountable for quality nursing practice, thus they need to be appropriately trained, oriented and directly supervised. Only the highly qualified and motivated professionals can provide the skill and knowledge needed to the students to meet the challenges of today. So, we pledge that maintaining the quality of T.U., I.O.M, we will be providing outstanding facilities and help the students to achieve great success in future too.

Through this short message I would like to extend my sincere gratitude to our aspiring students, dedicated team of faculty, administrative and supporting staffs and the parents for responding their trust and belief to us.

Prof. Neeta Tamrakar
Campus Chief



About Us

Tribhuvan University Institute of Medicine, Pokhara Nursing Campus, is established in 1982 in Pokhara, situated at the heart of Pokhara Metropolitan City, Kaski, Gandaki Province, as an educational institute to educate young Nepalese women and men entering the field of nursing.

Pokhara Nursing Campus is one of the constituent campus of Tribhuvan University, Institute of Medicine (TU, IOM) which has become one of the pioneer educational organization in Nepal since its establishment. Within four decades, the campus gradually expanded its academic program from CMA then PCL to Master in Nursing (MN) and currently it has different programs such as Bachelor in Nursing Science (BNS), Bachelor of Science (B.Sc) in Nursing and Master in Nursing (MN) whereas intake of PCL Nursing has been stopped since 2018 A.D. Pokhara Nursing Campus is an academic center of excellence through the foundation of nursing with its specialization in Adult Health Nursing, Women's Health and Development and Child Health Nursing in Master program. Since its inception, the campus has achieved remarkable success in terms of quality education and infrastructural development.

The post Basic Bachelor of Nursing (PBBN) programme was started in the Pokhara Nursing Campus in 2005 B.S. and later it was changed into 3 years BNS program in 2013 A.D. Likewise, B.Sc Nursing is a 4 year program which was started in 2016 AD. with the intake of 20 students per year. In 2011 AD. Master in nursing program was started with the intake of 4 students in adult health nursing specialty and later expanded with child health nursing and women health and development specialty in 2074 B.S.

Vision

To be a center of academic excellence to advance health and wellness across the life span for the people through nursing education, research and service.

Mission

Prepare outstanding and competent nursing human resources with leadership qualities through nursing education.

Deliver exceptional compassionate health care through education, practice, research, innovation and integrity.

Goal

The goal is to achieve academic excellence through the scientifically driven academic programs for equitable and accessible quality higher education.

Objective

- To develop different level of qualified, skillful, task oriented nursing personnel according to our national and global need
- To render preventive, promotive and curative services to the people through the students clinical/field practices
- To prepare qualified nurse leader, educator and manager in basic and advanced level professional nursing practice in a rapidly changing, multicultural, multiethnic global environment
- To promote, expand and validate the scientific base of nursing knowledge and practice through the discovery, organizational transmission of research based knowledge, skill and values.



Bachelor of Nursing in Science

First Year

- Integrated Basic Health Sciences I (Theory)
- Integrated Basic Health Sciences II (Theory)
- Integrated Basic Health Sciences (Practicum)
- Nursing Concepts and Principles (Theory)
- Adult Health Nursing I (Theory)
- Adult Health Nursing I (Practicum)
- Child Health Nursing I (Theory)
- Child Health Nursing I (Practicum)
- Geriatric Nursing (Theory)
- Geriatric Nursing (Practicum)
- Comprehensive English (Theory)
- Computer Application (Theory)

Second Year

- Social Science Applied to Nursing (Theory)
- Community Health Nursing I (Theory)
- Community Health Nursing I (Practicum)
- Midwifery I (Theory)
- Midwifery I (Practicum)
- Psychiatric Nursing I (Theory)
- Psychiatric Nursing I (Practicum)
- Teaching and Learning (Theory)
- Teaching and Learning (Practicum)
- Health Economics and Nursing (Theory)

Third Year

- Leadership and Management (Theory)
- Management (Practicum)
- Research Applied to Nursing (Theory)
- Research (Practicum)
- Major Subjects (Elective)
 - Adult Health Nursing II (Practicum)
 - Community Health Nursing II (Practicum)
 - Child Health Nursing (Practicum)

Master of Nursing

First Year

- Nursing Theories & Models (Theory)
- Epidemiology and Bio-Statistics (Theory)
- Nursing Research (Theory)
- Trends & Issues in Nursing (Theory)
- Educational Science (Theory)
- Health Service Management (Theory)
- Advanced Nursing I (Theory) – Speciality
 - Women's Health & Development
 - Adult Nursing
 - Child Health Nursing
- Advanced Nursing I (Practicum) – Speciality
 - Women's Health and Development
 - Adult Nursing
 - Child Health Nursing

Second Year

- Advanced Nursing II – (Theory) – Specialty
 - Women's Health and Development
 - Adult Nursing
 - Child Health Nursing
- Advanced Nursing II – (Practicum) – Specialty
 - Women's Health and Development
 - Adult Nursing

Bachelor of Science in Nursing

First Year

- Integrated Basic Health Sciences I (Theory)
- Integrated Basic Health Sciences II (Theory)
- Integrated Basic Health Sciences (Practicum)
- Fundamental of Nursing (Theory)
- Fundamental of Nursing (Practicum)
- Community Health Nursing (Theory)
- Community Health Nursing (Practicum)
- Nutrition and Diet Therapy (Theory)

Second Year

- Adult Nursing I (Theory)
- Adult Nursing II (Theory)
- Geriatric Nursing (Theory)
- Adult and Geriatric Nursing (Practicum)
- Psychiatric Nursing (Theory)
- Psychiatric Nursing (Practicum)
- Nursing Concepts (Theory)
- Social and Behavioral Science (Theory)

Third Year

- Midwifery I (Theory)
- Midwifery I (Practicum)
- Midwifery II (Theory)
- Midwifery II (Practicum)
- Child Health Nursing (Theory)
- Child Health Nursing (Practicum)
- Family & Reproductive Health Nursing (Theory)
- Family & Reproductive Health Nursing (Practicum)

Fourth Year

- Management and Health Economics (Theory)
- Management (Practicum)
- Educational Science (Theory)
- Educational Science (Practicum)
- Research and Biostatistics (Theory)
- Research (Practicum)



Admission Requirement

Master of Nursing (MN)

The candidate must have to pass the BNS or B.Sc. nursing from the recognized institution with one year of working experience. Candidate should score minimum of 50% (pass marks) in the entrance examination conducted by Government of Nepal, Medical Education Commission for being eligible to be in the merit list.

Bachelor of Nursing Science (BNS)

Candidate must have passed Proficiency Certificate Level Nursing with 50% in aggregate from a recognized institution. Candidate must be registered in Nepal Nursing Council and should have at least one year experience in nursing practice after registration. Students for the program are selected according to the merit list of entrance examination and open house counseling conducted by Institute of Medicine.

Bachelor of Science in Nursing (B.Sc Nsg)

Candidate must have passed 10+2 Science from recognized institution securing at least 50% marks in aggregate with major subject as Biology. Students for the program are selected according to the merit list of entrance examination and open house counseling conducted by the Institute of Medicine.

Fee Structure & Scholarship

The campus collects fee from the students as per T.U. IOM policy. The campus, also provides scholarships to the needy students who come from different backgrounds. Each year, campus administration notifies to all its students regarding the application procedure, requirement and deadlines for the scholarships. Each year, 2 students from Bachelor level (i.e. 6 students from BNS and 8 students from BSN) and 1 student from Master in Nursing (i.e. 2 students in total) get scholarship on the merit basis. These facilities are provided by the campus itself and Tribhuvan University.

| S.No. | Program | Type | Full Course Fee | |
|-------|----------|-------------|-----------------|----------------|
| | | | With Hostel | Without Hostel |
| 1 | MN | Scholarship | 286,510.00 | 267,110.00 |
| | | Full Paying | 570,560.00 | 751,160.00 |
| 2 | BNS | Scholarship | 31,890.00 | 6,890.00 |
| | | Full Paying | 549,180.00 | 525,180.00 |
| 3 | BSc. Nsg | Scholarship | 31,890.00 | 6,890.00 |
| | | Full Paying | 806,319.00 | 782,319.00 |



Hostel/Quarter

Pokhara Nursing Campus has provided **hostel** facility to the students that consists of 6 blocks having 79 rooms with the capacity of accomodating 158 students. There is separate block for kitchen and dining hall. Warden quatar is available for Warden who is responsible for overall activities of hostels. One female guard is also assigned for night time security.

There is a provision of **residence/quatar** for faculties and staffs with 3 blocks named A, B and C. Overall it consists of 15 sub-blocks. Each sub-block consists of 2 bedroom, 1 living room, 1 kitchen and a bathroom.

Library

Campus is providing library facility that consists of different textbooks, national and international reference books, journals, periodicals. It provides a wide range of congenial study environment for 100 readers with a spacious well-furnished reading room. At present, the library holds 7000 text books, 2000 reference books and 100 national, international journals 80 and 1996 other books. Also having more than 2 national daily newspapers.

Nursing Laboratories

Campus has four laboratories which includes Fundamental of Nursing skill Lab, Midwifery and Paediatric lab, Basic science lab, Community and Nutrition skill lab. All the laboratories are well furnished and well equipped.

Transportation

Campus has one jeep for official use and a bus which provide transport facility for different academic activities of students. Students are taken to different community field for community posting, leadership and management, observation visit and institutional visit to different organization and hospitals.



Infrastructure & Facilities

E-Library

Campus has E-Library with 16 desktop computers along with internet service. The library's digital collection continues to grow at a rapid pace as a E-Resource Centre. It provides online access to different databases such as HINARI, AGORA, GOALI, OARE and ARDI for faculty members, students and researchers. In addition, there is collection of research report of bachelor and master students.

Classroom

The classrooms are well furnished and well equipped with the capacity of holding about 45 students. Each classroom is equipped with Multi media projector and whiteboard. Additional infrastructures like ceiling fan, electricals port, solar facility, internet connection is available.

Playground

Campus has adequate unoccupied space which has been used for playground during sports activities. Games like volleyball, Tug of War, pot breaking and musical chair are being played. A table tennis board is also present in the playground.

Internet

Pokhara Nursing Campus has total dedicated bandwidth of 15 Mbps. Campus is providing fully dedicated wired and wireless internet facility to the all the faculty, staffs and students in administration, faculty rooms, departments, library, E-library, hostel and residence.

Power Backup

For smooth and continuous functioning of campus activities, the campus has electric back up facility. There is 1 generator (15 K.V with 13 power factor 0.8 at 50), solar (rating 3.5 K.V.A input 230 V., inverter (Rating 5K.V.A amp/kw). There is solar line in each classroom.

First Aid

Campus has well equipped first aid room in the ground floor of the administration block. The room is well equipped with a bed with pillows, bedside locker, foot step, medicine cupboard, vital sign tray, oxygen cylinder, IV stand, IV fluids, dressing set, sanitary pads and all other minimum requirements for the first aid treatment.

Meeting Hall

Campus has well furnished and well equipped meeting hall with multi media projector, video conferencing, sound system and internet facility. It has the capacity of holding around 35 participants. This meeting hall is used for conducting various departmental, inter departmental meeting in the campus.

Seminar cum Conference Hall

This Seminar cum Conference hall is situated on 1st floor of library and classroom building. It is well furnished and well equipped with multi media projector, podium, sound system, internet. It has the capacity of holding around 30 participants. This hall is used for conducting various training workshop, seminars, meeting in the campus.

Vehicle Parking

There are three garage facility inside the campus premises for faculties, staffs and students. One garage is for bike and scooter, another small garage is for campus bus. In addition, there is separate garage facility in the residence area too.

Cafeteria

Campus has cafeteria where fresh hygienic food and delicious are made as preferred by faculty, staff and students. Cafeteria is airy with Wi-Fi internet access.

Co-curricular Activities

Round the year, students are posted to community field visit, institutional visit, different hospitals and specialized centres like cardiac hospital, cancer hospital, eye hospital, mental hospitals etc. as a part of their academic requirements. Apart from this, final year student of Bachelor and Master program conducts research in different health related areas. In addition students are involved in different program and activities conducted by other health related organizations.



Extra Curricular Activities

Extra Curricular activities helps to reduce stress, enhance the team spirit with overall physical and mental development. Under the students welfare committee, campus organizes sports week every year in order to explore the hidden talent and to give a break to the hectic schedule. It includes with wide range of indoor and outdoor games. Indoor activities includes Quiz competition, table tennis, chess, carom board, Ludo and outdoor activities includes Volleyball, football, Kabaddi, Badminton, Tug of War, Pot breaking, musical chair. The students are divided into four different houses named under four pioneer nursing theorist.

Houses: Nightingale, Orem, Handerson, Johnson

Students regularly participate in cultural program on different occasions such as welcome and farewell program, annual day and nurses day celebrations.



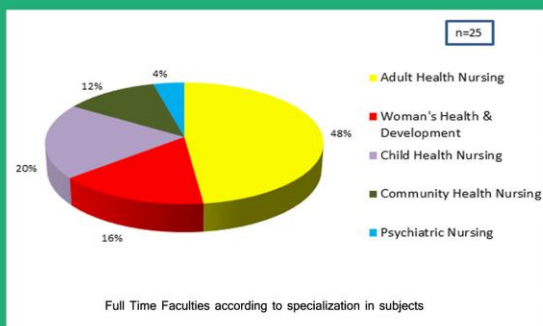
Education Management Information System (EMIS)

Pokhara Nursing Campus uses EMIS software for data collection and smooth running of campus activities. It is a web based system so that user can access it using their account from any place where the internet is available. All the data in the system is highly secured in cloud, applying the best security policy. All the academic information related to students and staffs are recorded in system. Financial work is done through the system where all the fee information of students is stored. The system is also running in the Library where all the information like Book records, book received & delivered by students and teachers are stored. Smart barcode system is used for proper functioning in Library. The system also works for attendance management of every staffs. Moreover, campus administrative as well as stock information can be stored in this system. Moreover, campus has formed an EMIS committee for proper management of Information System.

Faculty and Staff

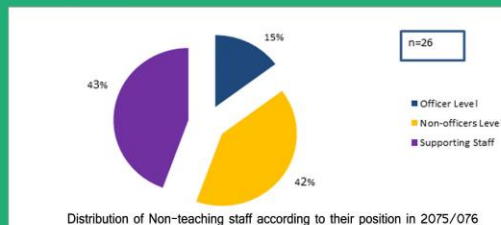
Academic Faculties

Pokhara Nursing Campus comprised of highly qualified and experienced faculty members with specialization in different stream that includes Adult Health Nursing, Women's Health & Development, Child Health Nursing, Community Health Nursing, Psychiatric Nursing and Oncology Nursing. All the faculties are very enthusiastic and have participated in different trainings, conferences, seminars, webinars and workshops. Also they eagerly carry out research and have published their work in different national and international journals. Faculty member take classes, supervise students in clinical and community practicum. Altogether there are 25 academic faculties in the campus.



Administrative Staff

Administrative staffs of Pokhara Nursing Campus include staffs from administration, academic administration, examination section, finance section, library, store and office helpers. They perform the administrative responsibilities and are dedicated to support student's teaching learning, research and public services. Altogether there are 26 administrative staffs in the campus.



Research Management Cell



With the main goal of promoting research culture, Pokhara Nursing Campus establishes Research Management Cell (RMC) in Mangsir, 2073 BS (December, 2016) with the financial support from University Grants Commission. The main purpose of RMC is to run the research related activities smoothly. It works as a center to serve the faculty members and students to enhance their academic and research capabilities, to provide resources for conducting research activities smoothly and support research projects.

The Research Management Cell invests its resources in areas of potential strength significant to the campus mission. Such areas provide particular depth of academic and research capability to offer quality research training opportunities to faculty members and students. For that purpose, the cell often conducts seminars/ training workshops for the faculty members and students.

Campus has been providing research grant to individual faculty and in team for their research project. Similarly, students of BNS, B.Sc. Nsg and MN are also being supported with research grant.

Pokhara Nursing Campus Alumni Forum

For the formation of Pokhara Nursing Campus Alumni forum (PNCFAF), alumni gathering was held on 15th Falgun 2076 BS on the chairmanship of Campus Chief Prof. Neeta Tamrakar who is also a former student of Pokhara Nursing Campus. Ad hoc (Tadartha) Committee of alumni was formed on the same day by the gathering on the leadership of Associate Professor Nirupa Thapa. PNCFAF is registered on 24th Bhadra 2077 with registration no. 4271. The purpose of this alumni forum is to foster a spirit of loyalty and to promote the general welfare of the Campus. Alumni forum exists to support the parent organization's goals, and to strengthen the ties between alumni, the community, and the parent organization. Similarly, alumni work for organizing social events, publishing newsletters or magazines, raising funds for the organization and providing a variety of benefits and services that help alumni maintain connections to our educational institution and fellow graduates. Additionally, this group often supports new alumni, and provides a forum to form new friendships and cordial educational relationships with people of similar background.



What our graduates doing?

At the very outset, I would like to take this opportunity to express my heartiest thanks to the Pokhara Nursing Campus family for shaping my future.

Learning is the essence of life. Being selected in one of the renowned campus of the country was a dream come true. Four years down the memory lane (both Bachelor's and Master's degree) was really positive and rewarding experience. I learned to take responsibility for own learning. The motivation and inspiration to keep the energy and stamina to its optimum in the endeavor was endlessly boosted by the entire faculties and staff of the campus. I always feel proud to address myself as student of this campus.



Pramila Baral

Lecturer

Nepal Medical College,
Kathmandu

Proper guidance is the key approach to desired consequences. Under the guidance, there comes excellence. Pokhara Nursing Campus has been that obligatory guidance to me. I am assured that among many reasons behind my academic enrichments, this Institute has been one of the fundamental aid to me and I am thankful to all the faculty members as well as the whole staff who have supported me during my studies. Cooperative, helpful and friendly and highly dedicated teachers have provided me with the opportunity to learn more. The support and encouragement of the teachers and friends have helped me to achieve excellence knowledge in my master's level and set a strong background.



Sujata Ojha

Lecturer

KarnaliAcademy of Health
Sciences, Jumla

As an ex-student of IOM Pokhara Nursing Campus. I appreciate your generosity and commitment to make me a better nursing scholar and person over the past 3 years.

I have learnt discipline and dignity which is massively important for the superior outcome and patient centered care. All those hard works that everybody put together was phenomenal and it has meant so many sacrifices for me , even though I know ultimately my career and personal satisfaction will be much greater.



Rasna Thapa

Staff Nurse

Kanti Children's Hospital,
Kathmandu

Future Plan

Future plan includes development and arrangement of own hospital for clinical learning facilities for the overall effectiveness of the programs and grow campus as center of excellence. The campus has planned to construct 300 bedded own teaching hospital in its own premises and currently working on it. It is on process of construction and recently have completed DPR.

Other infrastructure like conference hall, auditorium hall, hostel, over-head water tank, pipeline and other supporting infrastructure are planned to be added.

Basic science laboratory of different departments like anatomy, physiology, bio-chemistry, pathology, pharmacology and microbiology will be restructured with adequate equipments. Likewise, Fundamental of Nursing skill Lab, Midwifery and Paediatric lab, Community and Nutrition lab will also be well-equipped.

In addition, the campus has also plan to install CCTV security surveillance system and intercom communication system in near future.

Committee

1. Campus Administration
2. Internal Quality Assurance
3. Academic Administration and Examination
4. Construction and Maintenance
5. Procurement
6. Residence
7. Hostel and Mess Operation
8. Library Management and Development
9. Research
10. Education Management
Information System
11. Publication
12. Student Welfare
13. Labortary Management
14. Public Information/Realtion
15. Employment and Job Placement
16. Task Specific Committee

Some photographs of different activities



Annual Day 2075



Bsc Nursing 2073 Year Students



Sawaswati Temple



QAA Facilitation Workshop



Welcome & Orientation Program



Classroom



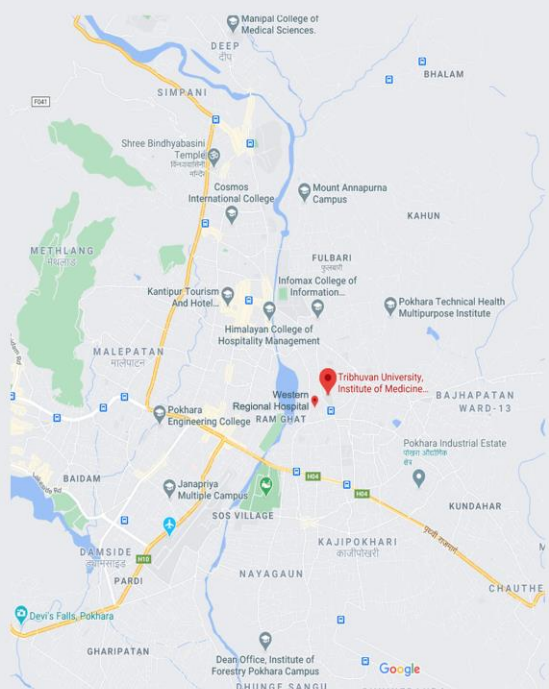
Annual Day 2076



Tree Plantation Program



Our Location



Contact



Tribhuvan University
Institute of Medicine
Pokhara Nursing Campus
 Ramghat-12, Pokhara, Kaski, Nepal

Tel No.: 061-520438, 520485

Email: info@iompnc.edu.np

URL: www.iompnc.edu.np